



CAMTRON

CNC ROUTERS

R1 SERIES

CAMTRON

www.camtroncnc.com

CAMTRON



R1 opens the door to CNC production

The most affordable CNC router in it's class. Stylish yet powerful, the R1 is designed to fit in small spaces with integrated electrical cabinet and handheld controller.

Felxible configurations

The R1 series is available in multiple configurations and sizes to meet almost any application and any budget.

High quality components

Despite this flexibility there is no compromise on quality. All components are from top manufacturers such as HSD(spindles),THK (bearings) and Yaskawa (servo motors and drives).

Fast delivery

CAMTRON lead time is among the shortest in the industry. We carry stock for almost every model and configurations with the most popular options

SPECIFICATONS

Standard Configuration

- All-Steel Heavy Duty 10mm Welded Frame
- Precision Stepper Motors
- Dual Motors on Y Axis
- 25mm Precision Guide Rails & Bearings
- Zoned Vacuum Table with T-Slots
- 10hp Vacuum Pump Blower Type with Silencer
- Unique Dust Free Pressure Foot System
- 5hp Twin Bag Dust Collector
- Dust Hose Ø4" with all Accessories
- Automatic Lubrication System
- Manual Tool Change
- Tool Measuring Devise
- Limit Switch on all Axis
- Active E-Stop Security on Columns
- Richauto A11 DSP control system
- Free Vecttric Cut2D Pro Programming Software
- Unlimited Free Phone Technical Support

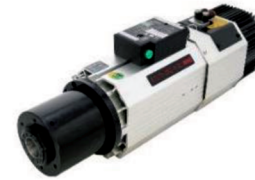
Optional Accessories

- Rotary 4th axis
- Multiple Spindles
- Addtional vacuum pump
- Cold air gun
- Oil mister
- Cyclone dust collector
- Vacuum pads

Models	R1-44	R1-84	R1-105	R1-106	R1-136	R1-206
Cutting Envelope Length (Y axis)	4ft (1300mm)	8ft (2500mm)	10ft (3000mm)	10ft (3000mm)	13ft (4000mm)	20ft (6000mm)
Cutting Envelope Width (X axis)	4ft (1300mm)	4ft (1300mm)	5ft (1500mm)	6ft (2000mm)	6ft (2000mm)	6ft (2000mm)
Cutting Envelope Height (Z axis)	8" (200mm) optional 12" and 14"					
Drive System Type (X & Y Axis)	Rack & Pinion					
Drive System Type (Z - Axis)	Ball Screw					
Spindle speed	24000 rpm					
Max. Rapid Feed	787 ipm					
Max. Cutting Feed	320 ipm					
Vacuum Table Type	PVC Vacuum Matrix Table With T-Slots					
Air Requirements	4cfm @ 100 psi					
Power Requirements	208-220V / 3 Phase					

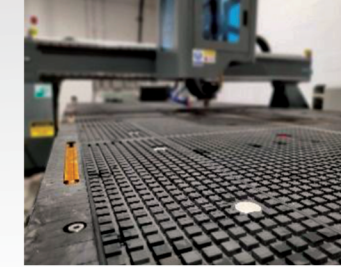
FEATURES

Spindle



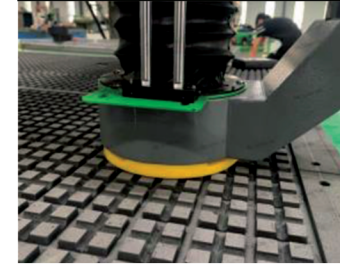
All R1 Series router machine comes standard with 8hp industrial grade spindle, with fully programmable speed of 24000rpm. This spindle configuration allows the user to cut in any material not only just wood.

Table



The standard vacuum matrix working surface with a machined grid pattern utilizing foam gasket tape. With additional T-Slots for added work holding versatility.

Pressure Foot



CAMTRON unique dust free pressure foot design. This revolutionary design helps keep your workshop clean and help stabilizing the material.

Tool Setter



Automatic tool setter as standard on all R1 series machines. For accurate tool measure and increase productivity

Gantry



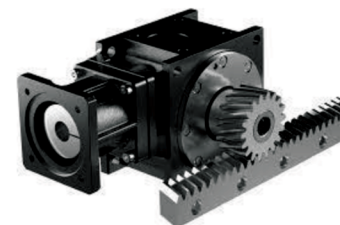
The gantry is constructed of tubular steel, which re-sults in a steady firm beam assembly. This quality engineering and workmanship result in smooth precision cutting

Vacuum Pumps



All R1 machines comes standard with air vacuum pump. A wide selection of different modeles is available as option.

Helical Rack



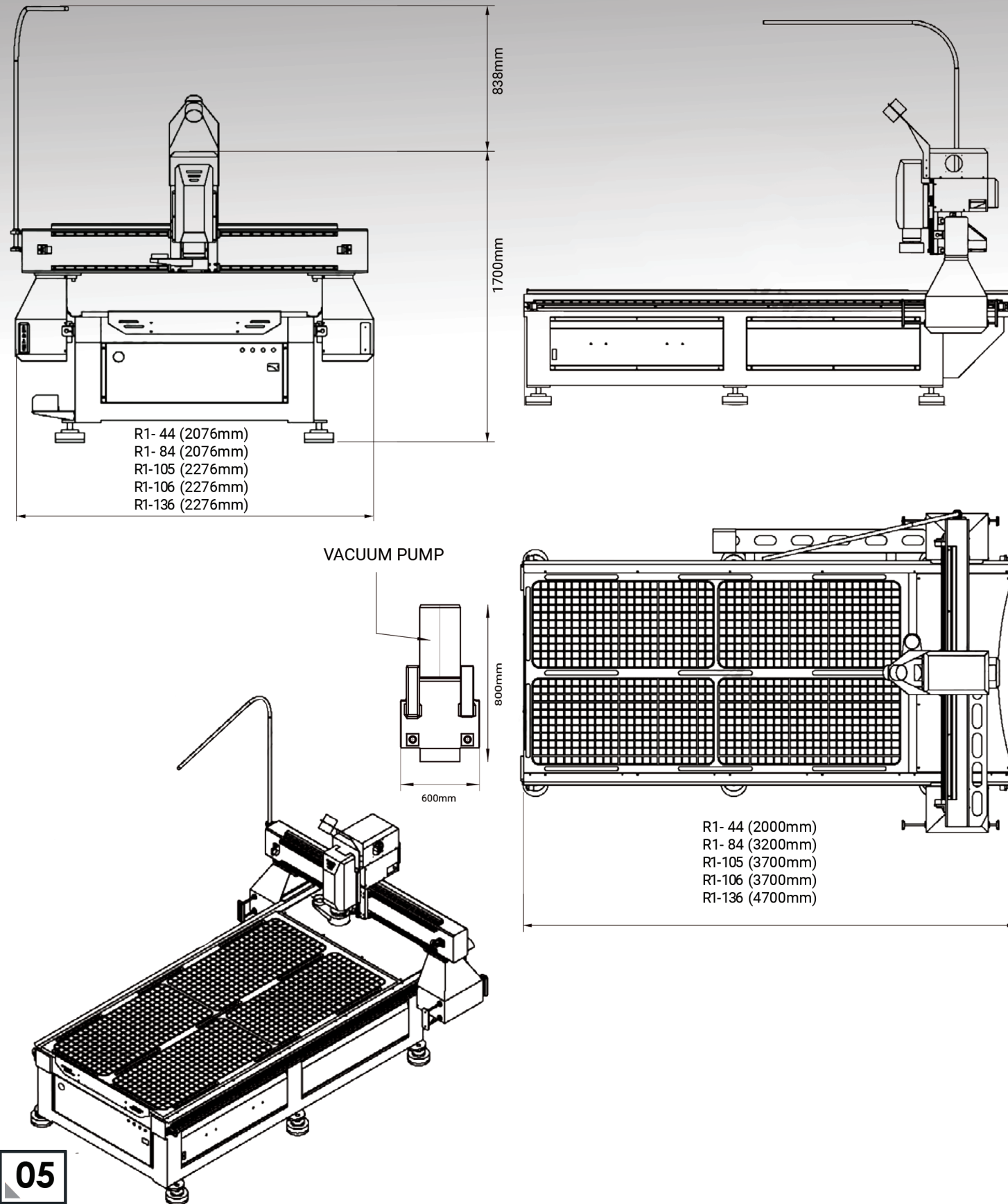
Rack pinion transmission combined with linear bearings delivering greater accuracy, smoother cutting and quieter running.

Handheld Control



Easy to use machine control at your fingertips for fast and easy setup with USB interface

FLOOR PLAN



SOFTWARE

The R1 CNC Router is designed to run from industry standard G-Code command language, this enables the router to work effectively with all of the common CAD/CAM software packages on the market.

The R1 includes the popular Vectric Cut 2D Pro CAD/CAM program:
Vectric – This affordable entry-level product requires little or no machining knowledge, making it the perfect option for any new router owner. Unique software tools guide you through the entire process, from conceptual sketch to the finished piece or mould. Whether you are a new or small independent company Vectric enables you to do things such as: Engraving, Metal Cutting, Woodworking, Sign Making, Ice Sculpting, profiling & much more.

- No previous CAD or CNC machining experience required.
- Intuitive tools & interface saves hours of your valuable time.
- Speed & reliability means you can take on more business.
- Adapt and re-use your designs to open broader markets.
- You can be totally confident that as your business needs grow you can upgrade to other solutions in the Vectric range.
- Your existing skills are simply and seamlessly transferable.

Vectric
PASSIONATE ABOUT CNC

Other popular software's that are compatible:

